



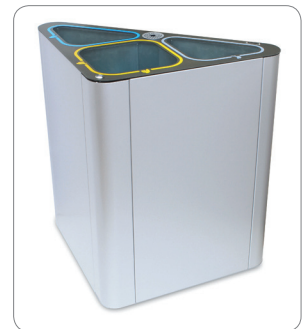
DUBLIN

Metal Waste and Recycling Bins

Stylish. High performance waste and recycling bin.

KEY FEATURES

- Large capacity triangular bin
- EES (Ergonomic Emptying System)
- Available with metal inner liners
- SLIM-FIT: Plastic bags that saves money
- Internal walls with separate compartments for each waste
- Hinged lid with key lock
- Standard fourth additional waste: batteries or ashtray
- Accessories: rain hood, front waste adhesives, ground anchor bolts, Kaizen ashtray, sorting slots, advertising panels



SPECIFICATIONS

Capacity: 150 litres (40+70+40 L drum)
H: 815mm W: 850mm D: 480mm
Height with Rain Hood: 966mm



STOCK COLOURS

